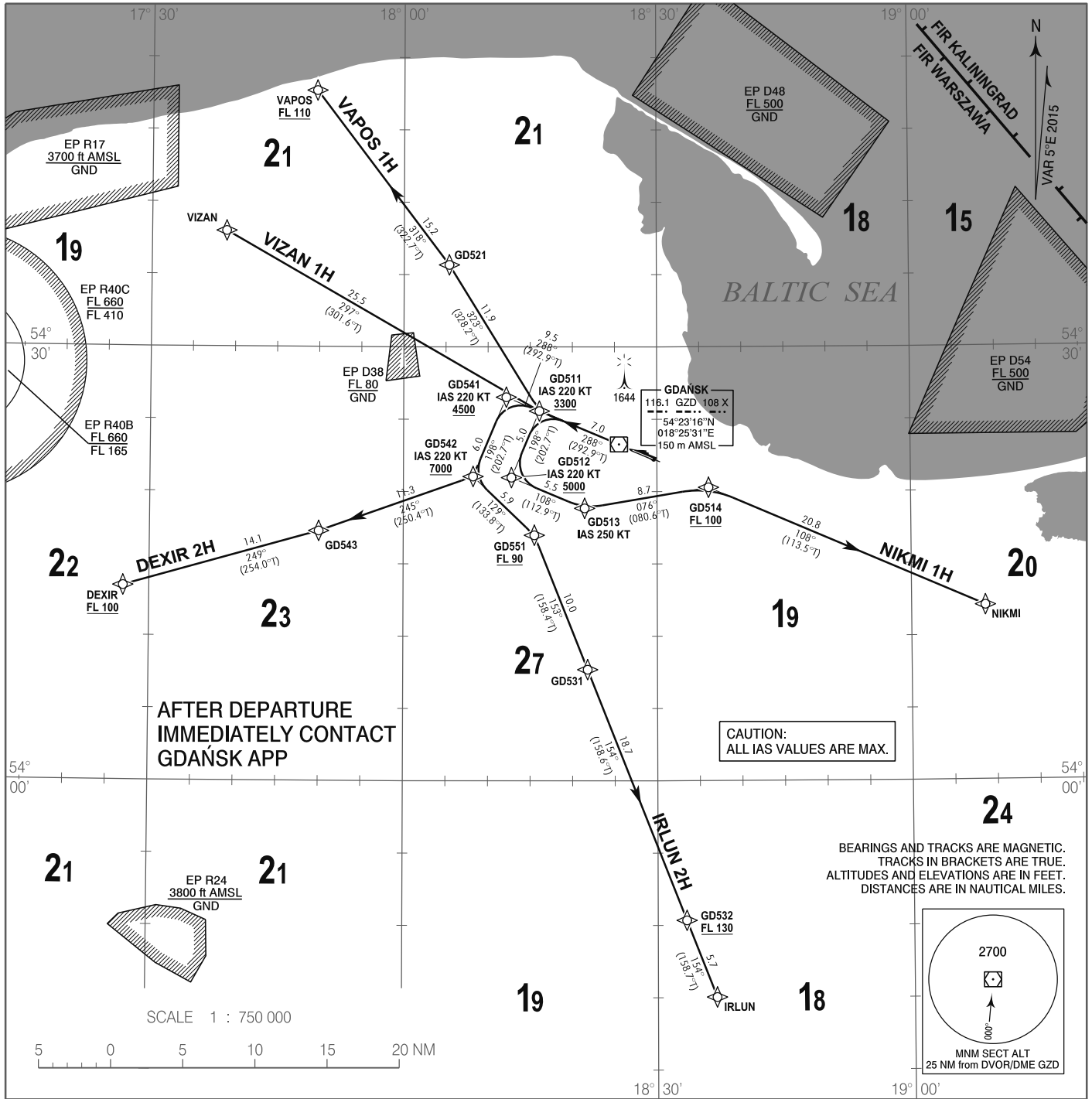


**RNAV 1 (GNSS)
STANDARD DEPARTURE CHART
INSTRUMENT (SID) - ICAO**

TRANSITION ALTITUDE 6500

Gdańsk DIRECTOR	133.660
Gdańsk APPROACH	127.280
Gdańsk DELIVERY	131.330
Gdańsk TOWER	118.105

**GDAŃSK Lech Walesa
RWY 29**



Correction: EP D55 withdrawn. EP R17, R24 changed. EP D38, D48, D54 changed.

1. RNAV 1 approval required to conduct these procedures without additional restrictions. However it is possible to utilize RNAV 1 trajectories by RNAV 5 only approved a/c. The following restriction apply: a/c equipped with RNAV 5 systems without navigation database, and requiring manual data input are exempted from the utilization of RNAV 1 procedures.
2. All a/c which can not follow and utilize RNAV 1 procedures shall advise ATC before start-up. Radar vectoring will be provided, usually along published procedures.
3. Expect direct routing/shortcuts by ATC whenever possible (especially during off-peak hours).
4. MAX IAS during initial turn as indicated in route description.
5. A/c unable to achieve SID profile restrictions must request non-standard departure from ATC before start-up.

RADIO COMMUNICATION FAILURE PROCEDURE

Set the transponder to 7600.

If the climbing clearance did not include a time or geographical limit, maintain for 7 minutes the level and speed cleared by ATC, then continue in accordance with the FPL.
If the a/c was radar vectored, continue for 3 minutes on the assigned heading, then proceed in the most direct manner to the last SID point, climbing to the FPL flight level.