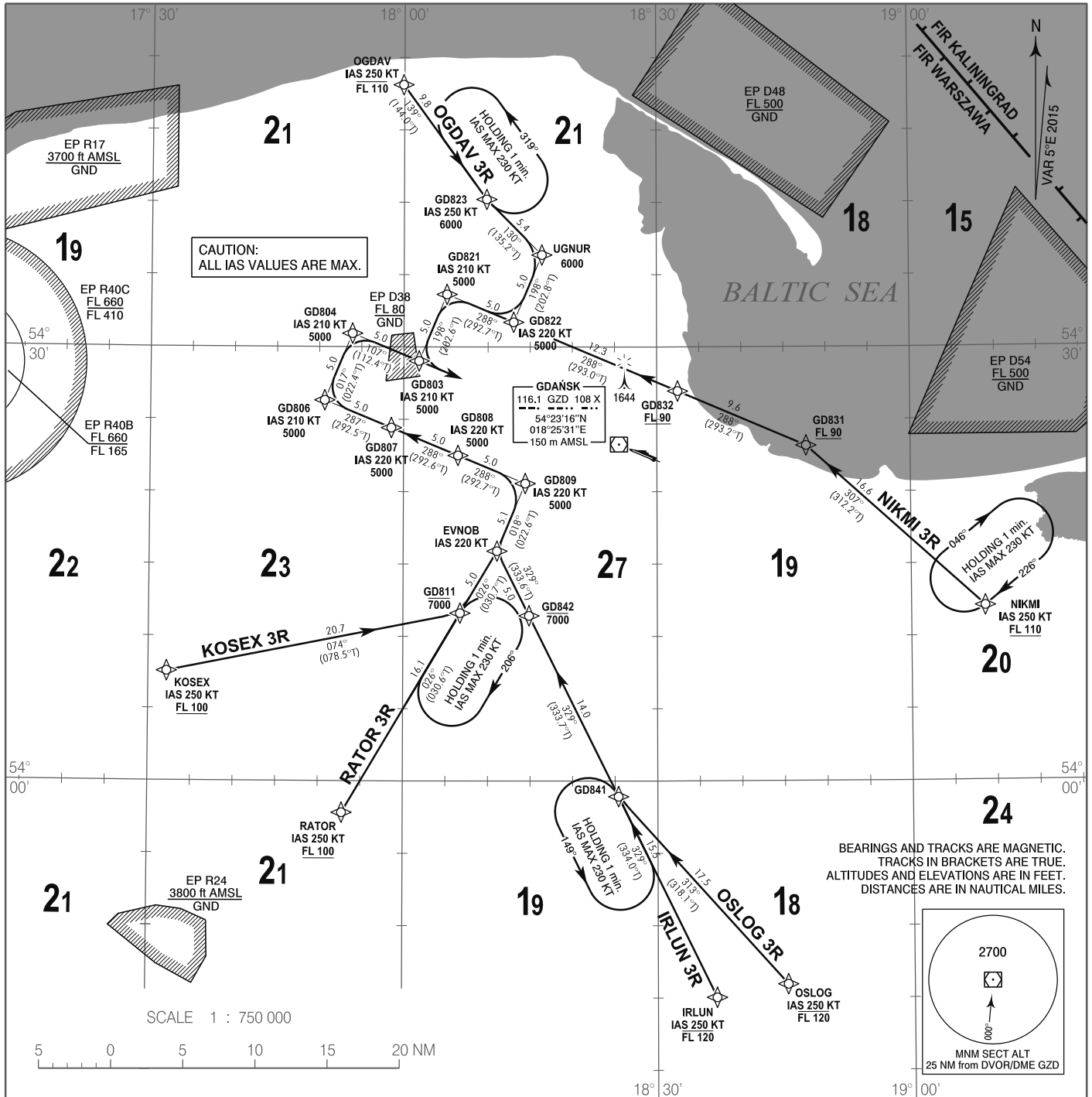


**RNAV 1 (GNSS)  
STANDARD ARRIVAL CHART  
INSTRUMENT (STAR) - ICAO**

TRANSITION ALTITUDE 6500

Gdańsk DIRECTOR	133.660
Gdańsk APPROACH	127.280
Gdańsk TOWER	118.105
ATIS	129.630

**GDAŃSK Lech Walesa  
RWY 11**



Correction: EP D55 withdrawn. EP R17, R24 changed. EP D38, D48, D54 changed.

1. RNAV 1 approval required to conduct these procedures without additional restrictions. However it is possible to utilize RNAV 1 trajectories by RNAV 5 only approved a/c. The following restriction apply: a/c equipped with RNAV 5 systems without navigation database, and requiring manual data input are exempted from the utilization of RNAV 1 procedures.
2. All a/c which can not follow and utilize RNAV 1 procedures shall advise ATC upon first contact. Radar vectoring will be provided, usually along published procedures.
3. Holding patterns as directed by ATC, available for non RNAV 1 approved a/c.
4. Vertical planning information: air crews should plan for possible descent clearance in accordance with vertical restrictions specified on chart. Actual descent clearance will be as directed by ATC. If possible, CDA technique should be applied.
5. Expect direct routing/shortcuts by ATC whenever possible (especially during off-peak hours). The turn to final approach is usually performed by radar vectors to expedite traffic handling and for separation reasons.

**RADIO COMMUNICATION FAILURE PROCEDURE**

**RNAV 1 APPROVED AIRCRAFT**

- a) If a STAR was assigned and the flight crew acknowledged it, set the transponder to 7600, continue in accordance with the FPL and follow the assigned STAR, then execute an (ILS or VOR) approach and land. The descent shall be performed after 2 minutes from setting 7600, in accordance with the vertical restrictions specified on the chart.
- b) If a STAR was assigned, the flight crew acknowledged it and vectoring was initiated, set the transponder to 7600 and continue for 2 minutes (from setting 7600) on the assigned heading and at the last assigned and acknowledged altitude. Thereafter continue directly to the FAF/FAP, execute an (ILS or VOR) approach and land. The descent shall be carried out in accordance with the vertical restrictions specified on the chart.
- c) If no STAR was assigned, set the transponder to 7600 and continue in accordance with the FPL. Thereafter execute an (ILS or VOR) approach and land. The descent shall be performed in accordance with the vertical restrictions specified on the chart.

**RNAV 1 NOT APPROVED AIRCRAFT**

Set the transponder to 7600. Maintain the last assigned and acknowledged altitude/flight level. Proceed to DVOR/DME GZD. Over GZD descend to 4000 ft AMSL and then proceed to REP UVRIK (IF) VOR RWY 11 (R 288° MAG / D 10.0 NM DVOR/DME GZD) or REP IPLAM (IF) ILS RWY 29 and VOR RWY 29 (R 108° MAG / D 16.0 NM DVOR/DME GZD). Thereafter execute approach and land on the most convenient RWY depending on the wind direction and other conditions (ILS, VOR RWY 29 or VOR RWY 11).