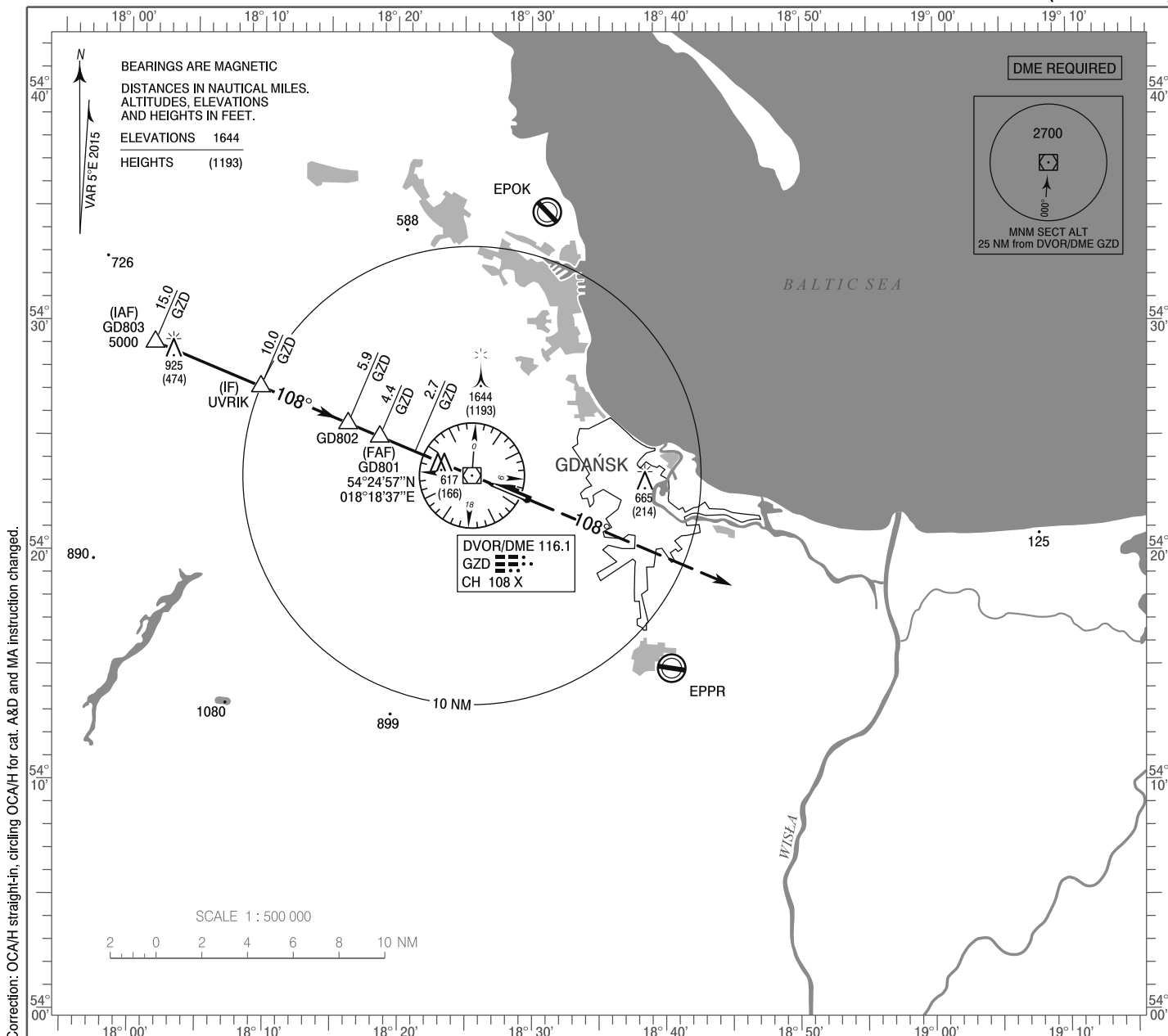


**INSTRUMENT
APPROACH
CHART - ICAO**

AERODROME ELEV 489 ft
THR RWY 11 ELEV 451 ft
HEIGHTS RELATED TO THR RWY 11

Gdańsk DIRECTOR 133.660
Gdańsk APPROACH 127.280
Gdańsk TOWER 118.105
ATIS 129.630

**GDĄŃSK Lech Wałęsa
VOR
RWY 11 (CAT A/B/C/D)**

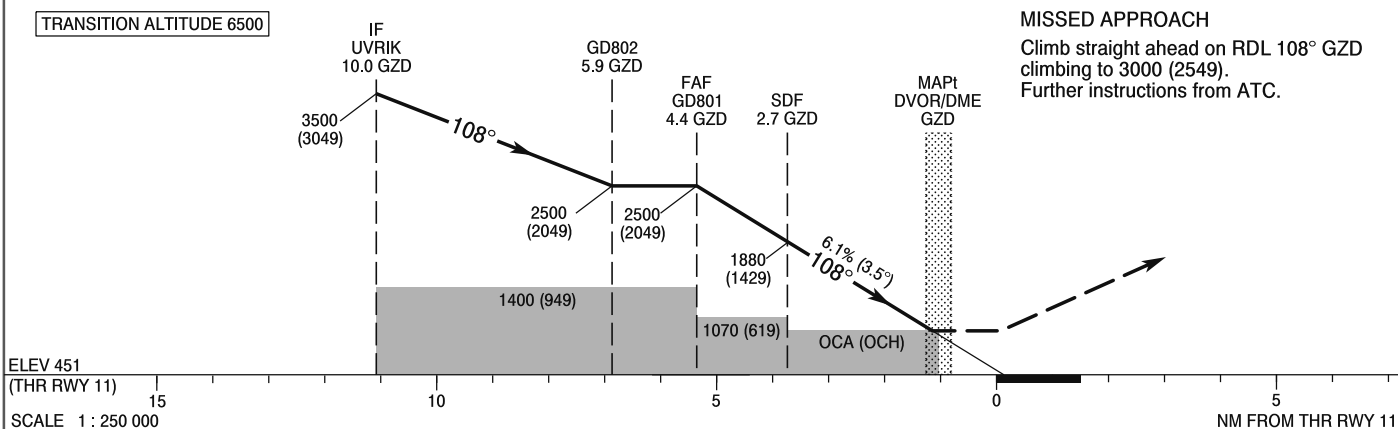


Correction: OCA/H straight-in, circling OCA/H for cat. A&D and MA instruction changed.

TRANSITION ALTITUDE 6500

MISSED APPROACH

Climb straight ahead on RDL 108° GZD climbing to 3000 (2549).
Further instructions from ATC.



OCA (OCH)					Distance FAF - MAPt 4.4 NM							
Cat. of ACFT	A	B	C	D	Speed	kt	80	100	120	140	160	180
Straight - in	930 (479)	930 (479)	930 (479)	930 (479)	Time	min : s	3 : 17	2 : 37	2 : 11	1 : 52	1 : 38	1 : 27
	When stepdown fix not received				Rate of descent	ft / min	500	620	750	870	990	1120
	1070 (619)	1070 (619)	1070 (619)	1070 (619)			Final approach distance/altitude (height)					
Circling (OCH AAL)*	1070 (581)	1070 (581)	1160 (671)	1250 (761)	Distance		4	3	2	1		
*ACFT cat. D circling south of aerodrome only.					Altitude (height)		2370 (1919)	2000 (1549)	1630 (1179)	1250 (799)		

**INSTRUMENT
APPROACH
CHART - ICAO**

**GDAŃSK / Lech Walesa
VOR
RWY 11 (CAT A/B/C/D)**

FIX / POINT	LATITUDE	LONGITUDE	FIX FORMATION	
IAF GD803	54°29'02.0"N	018°01'49.2"E	292.81° GEO (288° MAG) DVOR GZD	15.00 NM DME GZD
IF REP UVRIK	54°27'07.0"N	018°09'44.0"E	292.81° GEO (288° MAG) DVOR GZD	10.00 NM DME GZD
GD802	54°25'32.0"N	018°16'15.4"E	292.81° GEO (288° MAG) DVOR GZD	5.87 NM DME GZD
FAF GD801	54°24'57.3"N	018°18'37.4"E	292.81° GEO (288° MAG) DVOR GZD	4.37 NM DME GZD
SDF	54°24'18.6"N	018°21'15.8"E	292.81° GEO (288° MAG) DVOR GZD	2.70 NM DME GZD
MAPt DVOR/DME GZD	54°23'16.1"N	018°25'31.0"E		
Final approach descent angle: 3.50°				