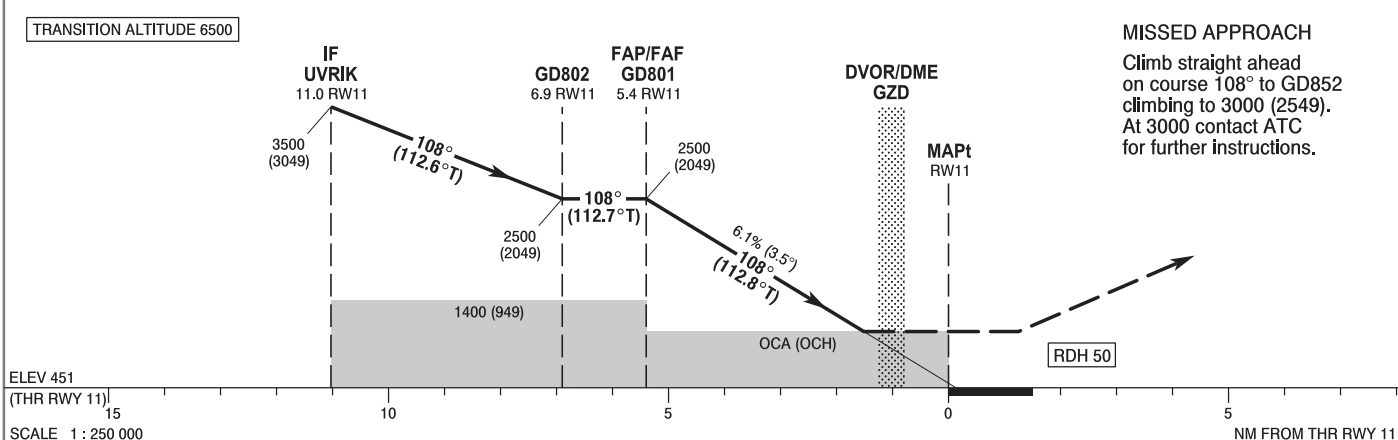
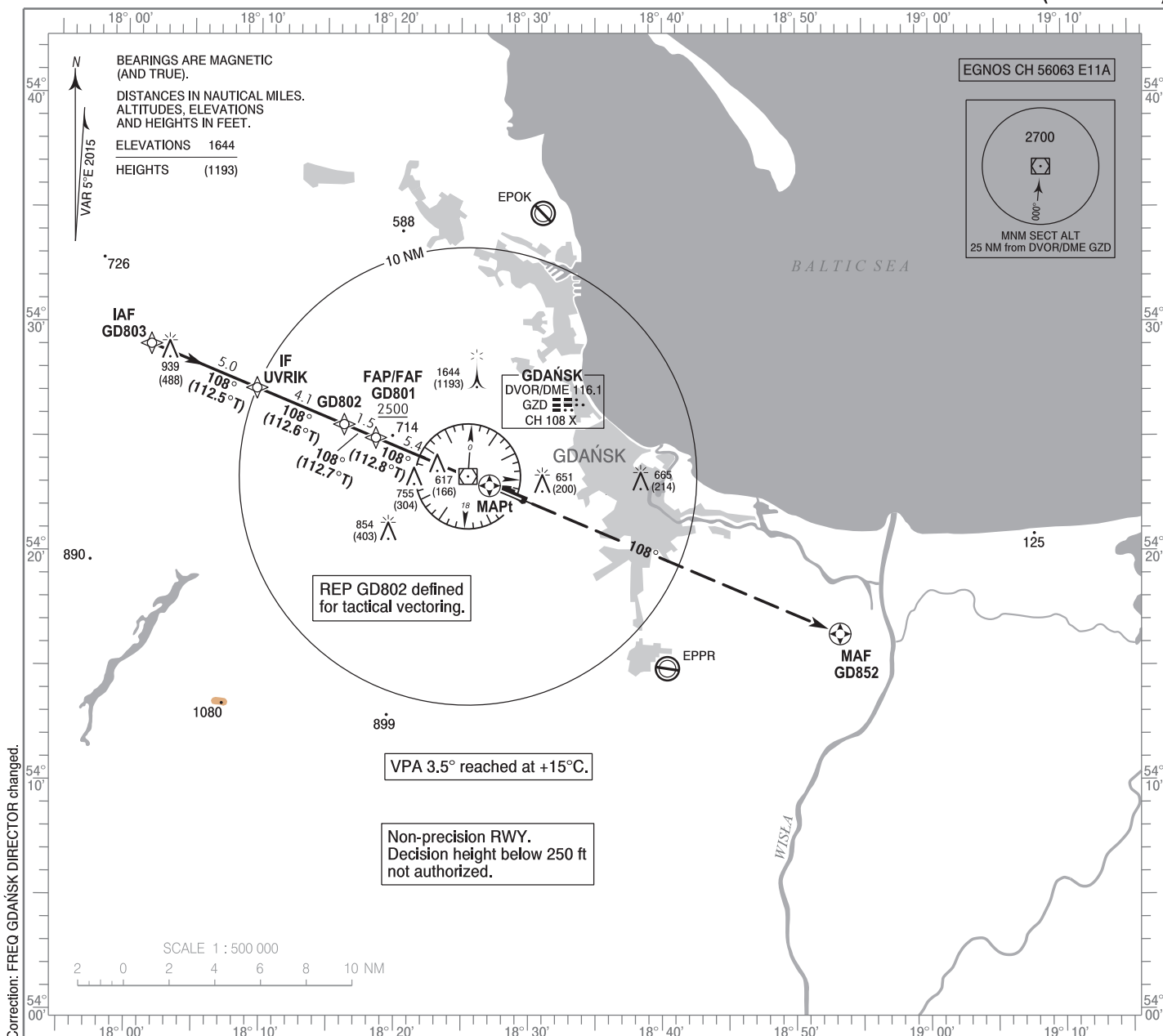


**INSTRUMENT  
APPROACH  
CHART - ICAO**

AERODROME ELEV 489 ft  
THR RWY 11 ELEV 451 ft  
HEIGHTS RELATED TO THR RWY 11

Gdańsk DIRECTOR 133.660  
Gdańsk APPROACH 127.280  
Gdańsk TOWER 118.105  
ATIS 129.630

**GDAŃSK Lech Wałęsa  
RNAV (GNSS)  
RWY 11 (CAT A/B/C/D)**



OCA (OCH)					Distance FAF - MAPt 5.4 NM								
Cat. of ACFT		A	B	C	D	Speed	kt	80	100	120	140	160	180
		Straight - in	LNAV	1060 (609)	1060 (609)	1060 (609)	1060 (609)	Time	min : s	4 : 03	3 : 14	2 : 42	2 : 19
LNAV / VNAV	740 (289)		750 (299)	760 (309)	770 (319)	Rate of descent	ft / min	490	610	740	860	980	1110
LPV	656 (205)		668 (217)	680 (229)	692 (241)		Final approach distance/altitude (height)						
Circling (OCH AAL)*		1060 (571)	1060 (571)	1160 (671)	1250 (761)	Distance		5	4	3	2		
*ACFT cat. D circling south of aerodrome only.						Altitude (height)		2360 (1909)	1990 (1539)	1620 (1169)	1250 (799)		