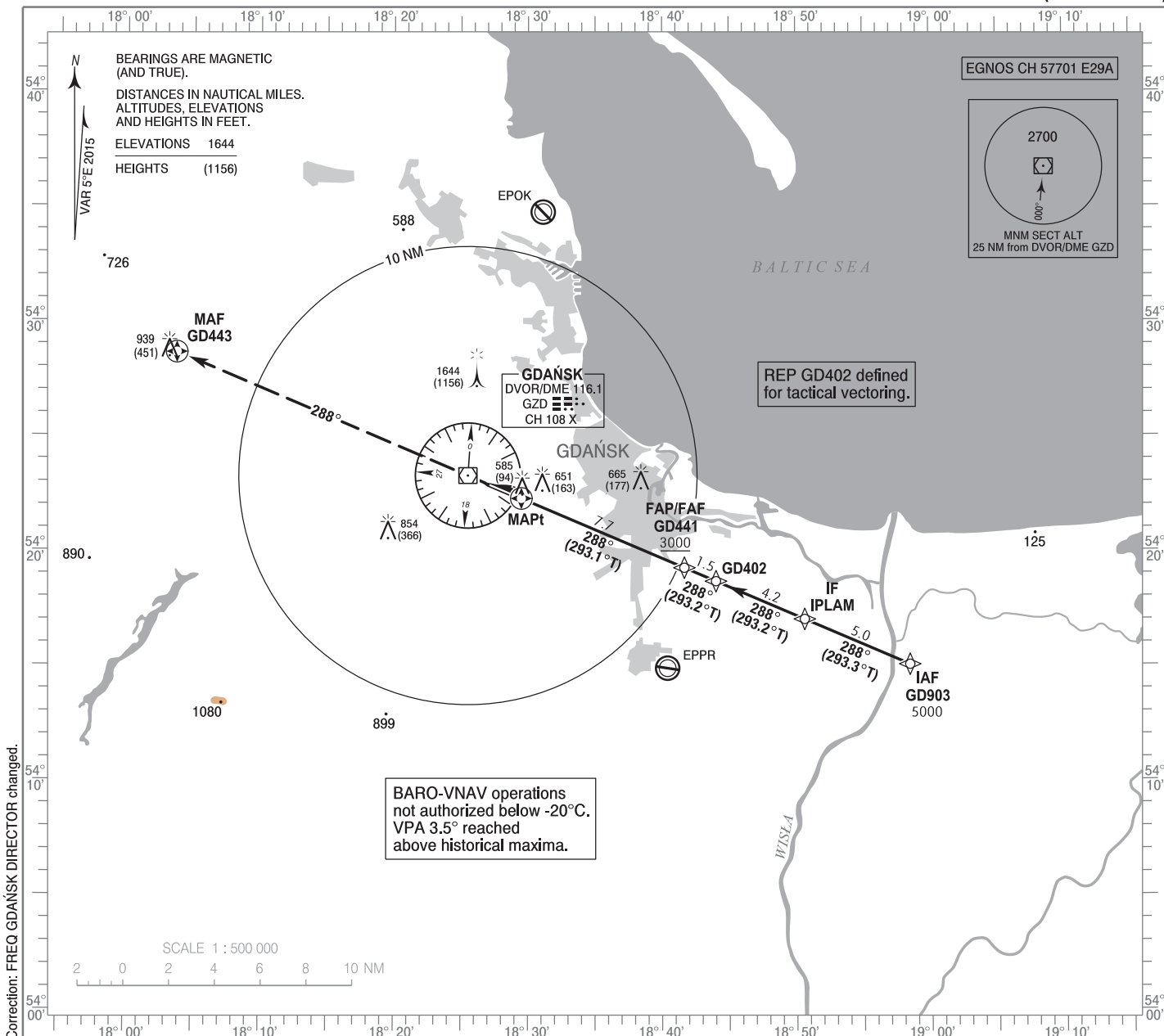


**INSTRUMENT
APPROACH
CHART - ICAO**

AERODROME ELEV 489 ft
THR RWY 29 ELEV 488 ft
HEIGHTS RELATED TO THR RWY 29

Gdańsk DIRECTOR 133.660
Gdańsk APPROACH 127.280
Gdańsk TOWER 118.105
ATIS 129.630

**GDAŃSK Lech Wałęsa
RNAV (GNSS)
RWY 29 (CAT A/B/C/D)**



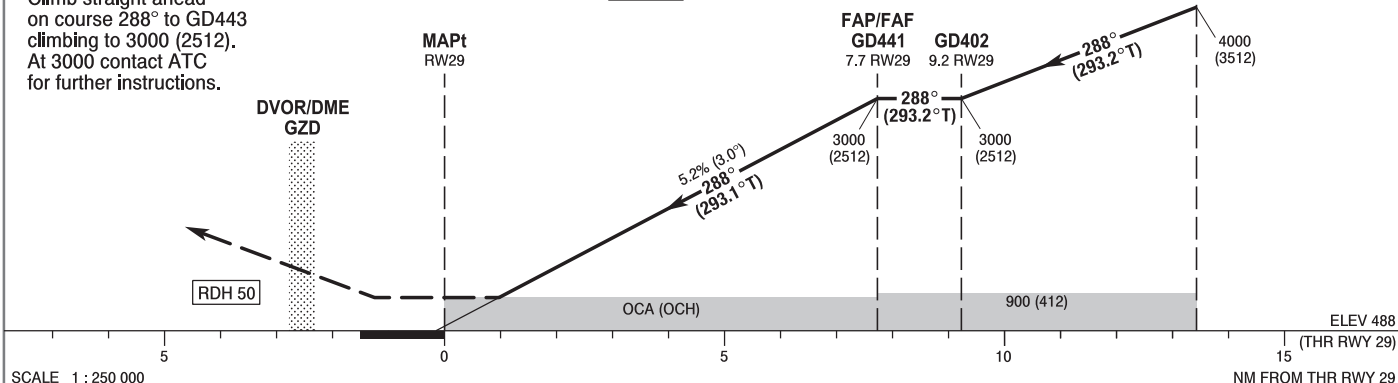
MISSED APPROACH

Climb straight ahead on course 288° to GD443 climbing to 3000 (2512). At 3000 contact ATC for further instructions.

Note: PAPI 3.0°

TRANSITION ALTITUDE 6500

IF IPLAM 13.4 RWY 29



OCA (OCH)					Distance FAF - MAPt 7.7 NM								
Cat. of ACFT	A	B	C	D	Speed	kt	80	100	120	140	160	180	
Straight - in	LNAV	850 (361)	850 (361)	850 (361)	850 (361)	Time	min : s	5 : 48	4 : 38	3 : 52	3 : 19	2 : 54	2 : 35
	LNAV / VNAV	740 (252)	740 (252)	740 (252)	750 (262)	Rate of descent	ft / min	420	530	630	740	840	950
	LPV	689 (201)	701 (212)	709 (221)	720 (232)		Final approach distance/altitude (height)						
Circling (OCH AAL)*	960 (471)	990 (501)	1160 (671)	1250 (671)	Distance	6	5	4	3	2			
*ACFT cat. D circling south of aerodrome only.					Altitude (height)	2450 (1962)	2130 (1642)	1810 (1322)	1500 (1012)	1180 (692)			