

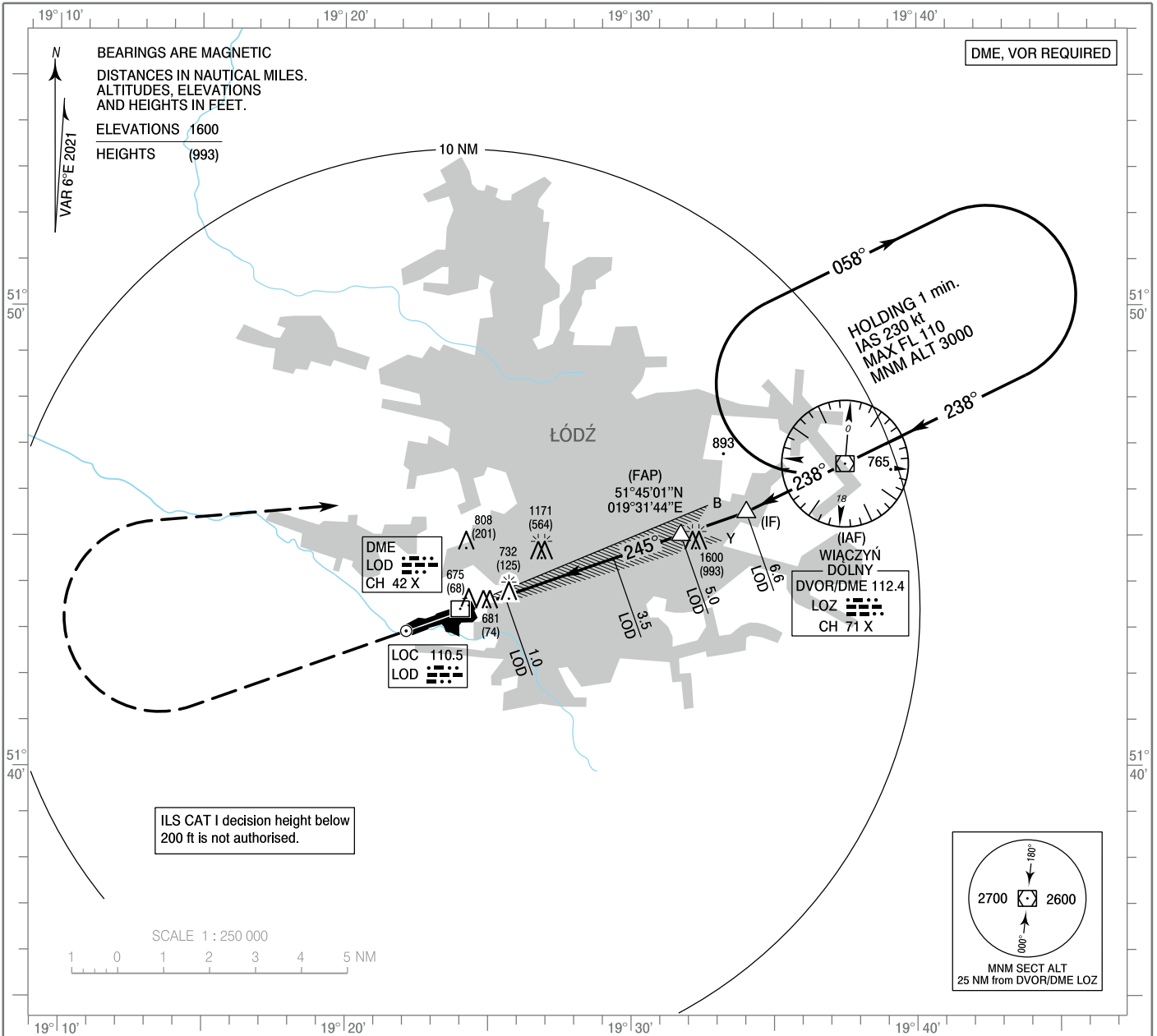
**INSTRUMENT  
APPROACH  
CHART - ICAO**

AERODROME ELEV 607 ft  
THR RWY 25 ELEV 607 ft  
HEIGHTS RELATED TO THR RWY 25

Łódź DELIVERY 120.005  
Łódź TOWER 124.230  
ATIS 135.680

**Łódź**  
**ILS y or LOC y**  
**RWY 25 (CAT A/B/C/D)**

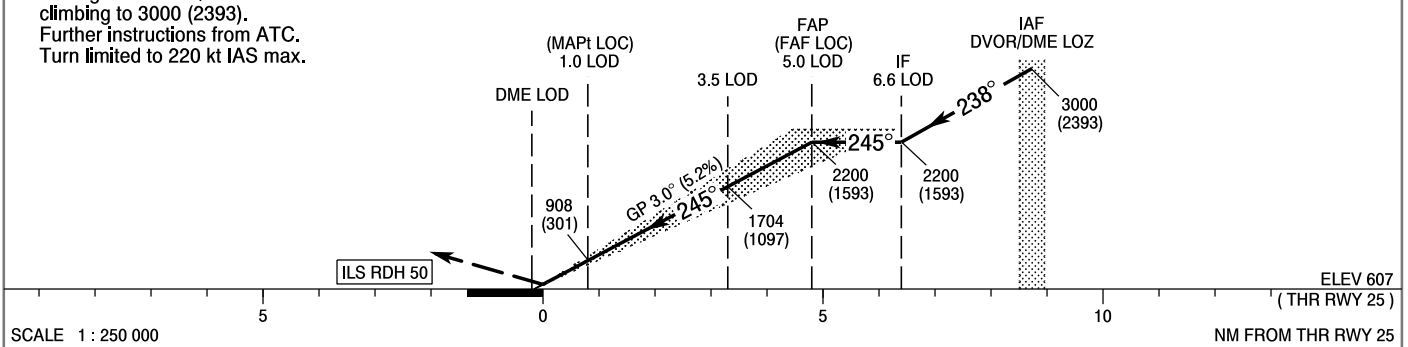
Correction: Vertical reference datum. AD and THR ELEV. OCA (OCH) Straight-in and Circling. Obstacles. Tables. Editorial changes.



**MISSED APPROACH**

Climb straight ahead to 1500 (893),  
turn right to DVOR/DME LOZ  
climbing to 3000 (2393).  
Further instructions from ATC.  
Turn limited to 220 kt IAS max.

TRANSITION ALTITUDE 6500



ELEV 607 (THR RWY 25)

OCA (OCH)					Distance FAF - MAPt 4.1 NM								
Cat. of ACFT	A	B	C	D	Speed	kt	80	100	120	140	160	180	
Straight-in	Cat. I	804 (197)	816 (209)	824 (217)	835 (228)	Time	min : s	3 : 03	2 : 26	2 : 02	1 : 44	1 : 31	1 : 21
	LOC	1050 (443)	1050 (443)	1050 (443)	1050 (443)	Rate of descent	ft / min	420	530	640	740	850	960
Circling (OCH AAL)*					Final approach distance/altitude (height)								
					Distance	5	4	3	2				
					Altitude (height)	2190 (1583)	1870 (1263)	1550 (943)	1230 (623)				

**INSTRUMENT  
APPROACH  
CHART - ICAO**

**Łódź**  
ILS y or LOC y  
RWY 25 (CAT A/B/C/D)

FIX / POINT	LATITUDE	LONGITUDE	FIX FORMATION	
IAF DVOR/DME LOZ	51°46'33.9"N	019°37'29.3"E		
IF	51°45'30.8"N	019°34'01.1"E	250.63° GEO (245° MAG) LOC LOD	6.56 NM DME LOD
FAP (FAF LOC)	51°45'01.2"N	019°31'44.3"E	250.63° GEO (245° MAG) LOC LOD	5.06 NM DME LOD
MAPt (LOC)	51°43'40.9"N	019°25'34.6"E	250.63° GEO (245° MAG) LOC LOD	1.00 NM DME LOD
Final approach descent angle: 3.00°				