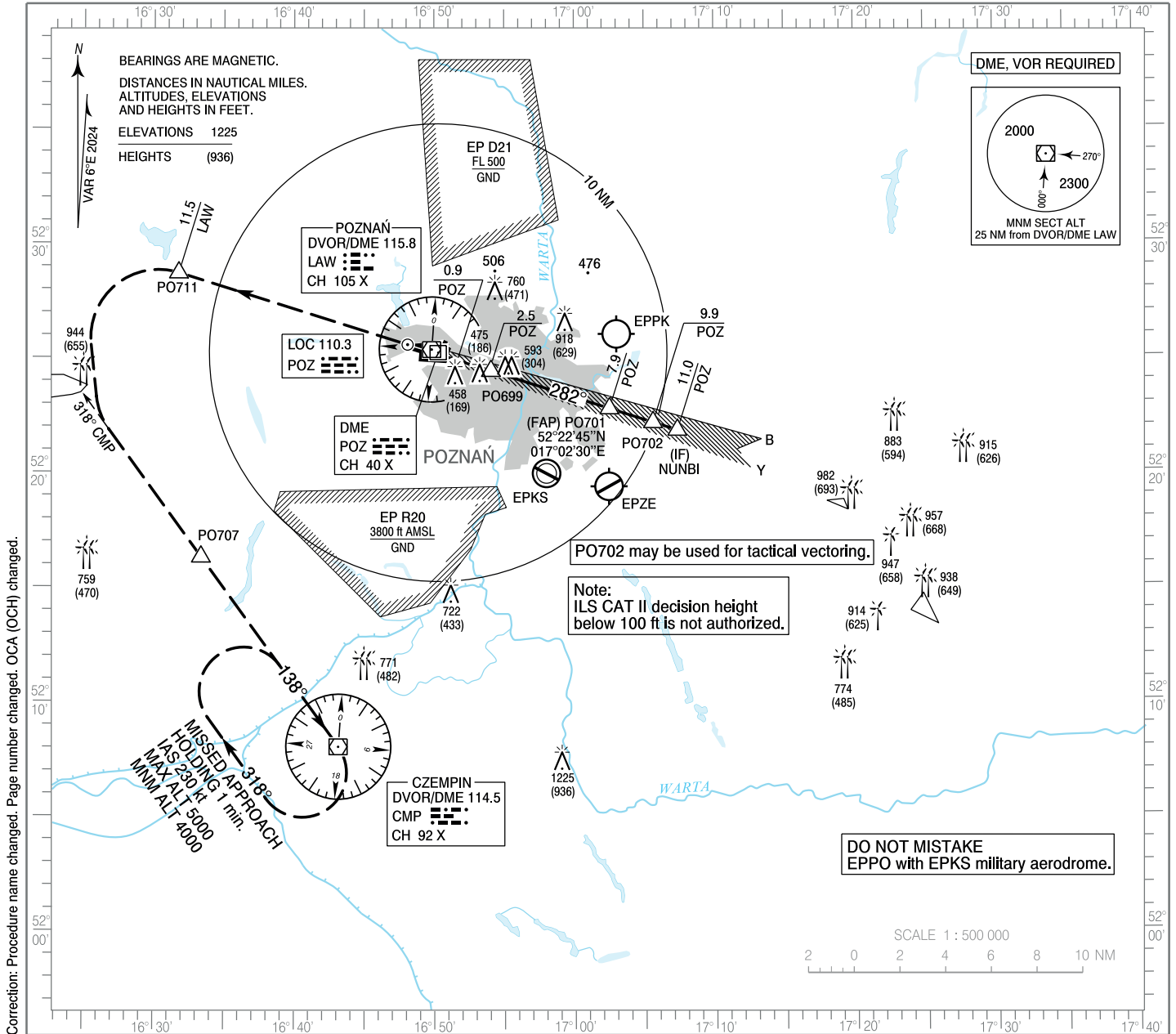


**INSTRUMENT  
APPROACH  
CHART - ICAO**

AERODROME ELEV 309 ft  
THR RWY 28 ELEV 289 ft  
HEIGHTS RELATED TO THR RWY 28

Poznań APPROACH 128.925  
Poznań GROUND 124.140  
Poznań TOWER 119.980  
ATIS 124.705

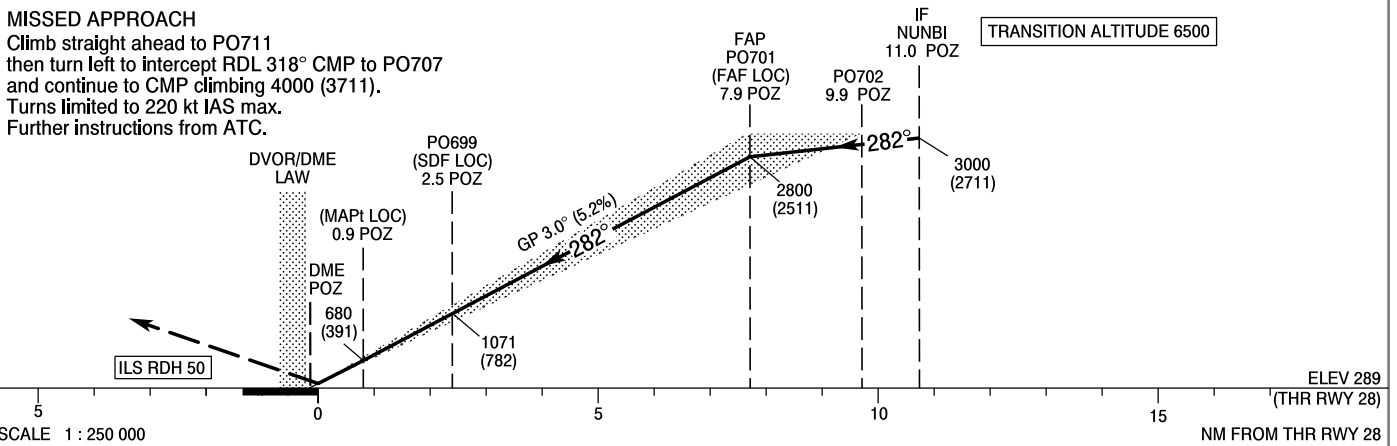
**Poznań - Ławica  
ILS y CAT II or LOC y  
RWY 28 (CAT A/B/C/D)**



Correction: Procedure name changed. Page number changed. OCA (OCH) changed.

**MISSED APPROACH**

Climb straight ahead to PO711 then turn left to intercept RDL 318° CMP to PO707 and continue to CMP climbing 4000 (3711). Turns limited to 220 kt IAS max. Further instructions from ATC.



OCA (OCH)					Distance FAF - MAPt 7.0 NM								
Cat. of ACFT		A	B	C	D	Speed	kt	80	100	120	140	160	180
		Straight - in	Cat. I	497 (208)	509 (220)	517 (228)	528 (239)	Time	min : s	5 : 14	4 : 11	3 : 29	2 : 59
Cat. II	387 (98)		404 (115)	416 (127)	430 (141)	Rate of descent	ft/min	420	530	630	740	840	950
LOC	680 (391)		680 (391)	680 (391)	680 (391)		Final approach distance / altitude (height)						
When stepdown fix not received.					Distance	7	6	5	4	3	2		
Circling (OCH AAL)					Altitude (height)	2520 (2231)	2200 (1911)	1890 (1601)	1570 (1281)	1250 (961)	930 (641)		

INSTRUMENT  
APPROACH  
CHART - ICAOPoznań - Ławica  
ILS y CAT II or LOC y  
RWY 28 (CAT A/B/C/D)

FIX / POINT	LATITUDE	LONGITUDE	FIX FORMATION	
IF NUNBI	52°21'48.2"N	017°07'20.0"E	287.53° GEO (282° MAG) LOC POZ	11.01 NM DME POZ
PO702	52°22'08.6"N	017°05'36.0"E	287.53° GEO (282° MAG) LOC POZ	9.89 NM DME POZ
FAP PO701 (FAF LOC)	52°22'45.1"N	017°02'29.5"E	287.53° GEO (282° MAG) LOC POZ	7.89 NM DME POZ
PO699 (SDF LOC)	52°24'23.8"N	016°54'02.8"E	287.53° GEO (282° MAG) LOC POZ	2.46 NM DME POZ
MAPt (LOC)	52°24'51.7"N	016°51'38.9"E	287.54° GEO (282° MAG) LOC POZ	0.92 NM DME POZ
PO711	52°28'41.2"N	016°31'45.4"E	286.99° GEO (281° MAG) DVOR LAW	11.54 NM DME LAW
PO707	52°16'17.4"N	016°33'23.0"E	324.15° GEO (318° MAG) DVOR CMP	10.25 NM DME CMP
DVOR/DME CMP	52°07'59.9"N	016°43'08.5"E		
Final approach descent angle: 3.00°				