



POLSKA AGENCJA ŻEGLUGI POWIETRZNEJ  
POLISH AIR NAVIGATION SERVICES AGENCY

SŁUŻBA INFORMACJI LOTNICZEJ  
AERONAUTICAL INFORMATION SERVICE

02-147 Warszawa, ul. Wieżowa 8  
AIS HQ: +48-22-574-5625, +48-81-452-5625  
fax: +48-22-574-5619, +48-81-452-5619  
AFS: EPWWYOYX  
e-mail: ais.poland@pansa.pl  
http://www.ais.pansa.pl

## AIRAC SUP 114/24 (AD 2 EPGD)

Data publikacji / Publication date  
**05 SEP 2024**

Obowiązuje od / Effective from  
**03 OCT 2024**

Obowiązuje do / Effective to  
**30 OCT 2025 EST**

**NOWA PRZESZKODA LOTNICZA W REJONIE LOTNISKA  
GDAŃSK IM. LECHA WAŁĘSY (EPGD)**

**NEW AERONAUTICAL OBSTACLE IN THE VICINITY OF  
GDAŃSK LECH WAŁESA (EPGD) AERODROME**

Nr/ No	Rodzaj przeszkody / Obstacle type	Numer identyfikacyjny / Identification number	Szerokość geograficzna / Latitude	Długość geograficzna / Longitude	Wysokość / Top of obstacle		Oznakowanie / Oświetlenie / Markings / LGT
					AGL (ft)	AMSL (ft)	
	<b>1</b>	<b>2</b>	<b>3</b>	<b>4</b>	<b>5</b>	<b>6</b>	<b>7</b>
1.	Radar PSM/MSSR mod-S Gdańsk	-	54 21 16.07 N	018 26 23.23 E	181	699	TAK/TAK, YES/YES

### 1. Zmiana minimów operacyjnych:

Radar PSM/MSSR mod-S Gdańsk będzie wyznaczał nowe wartości OCA (OCH) dla krążenia z widocznością (circling) w następujących instrumentalnych procedurach lotu:

ILS CAT II & III or LOC RWY 29: FM 960 (472) na 1000 (512) dla ACFT kat. A i FM 990 (502) na 1000 (512) dla ACFT kat. B;  
VOR RWY 29: FM 960 (472) na 1000 (512) dla ACFT kat. A i FM 990 (502) na 1000 (512) dla ACFT kat. B;  
RNP RWY 29: FM 960 (472) na 1000 (512) dla ACFT kat. A i FM 990 (502) na 1000 (512) dla ACFT kat. B.

**Uwaga:** Po weryfikacji i akceptacji danych przez Urząd Lotnictwa Cywilnego dane o przeszkodzie w tym obszarze zostaną wprowadzone do stałej zmiany AIP Polska EPGD AD 2.10 PRZESZKODY LOTNISKOWE.

Patrz: załącznik graficzny.

### Change of operational minima:

Radar PSM/MSSR mod-S Gdańsk will determine new OCA (OCH) values for visual circling for the following instrument flight procedures:

ILS CAT II & III or LOC RWY 29: FM 960 (472) to 1000 (512) for ACFT cat. A and FM 990 (502) to 1000 (512) for ACFT cat. B;  
VOR RWY 29: FM 960 (472) to 1000 (512) for ACFT cat. A and FM 990 (502) to 1000 (512) for ACFT cat. B;  
RNP RWY 29: FM 960 (472) to 1000 (512) for ACFT cat. A and FM 990 (502) to 1000 (512) for ACFT cat. B.

**Remark:** Upon verification and acceptance by the Civil Aviation Authority the obstacle data will be introduced into AIP Poland EPGD AD 2.10 AERODROME OBSTACLES.

See: graphical Appendix.

- KONIEC -

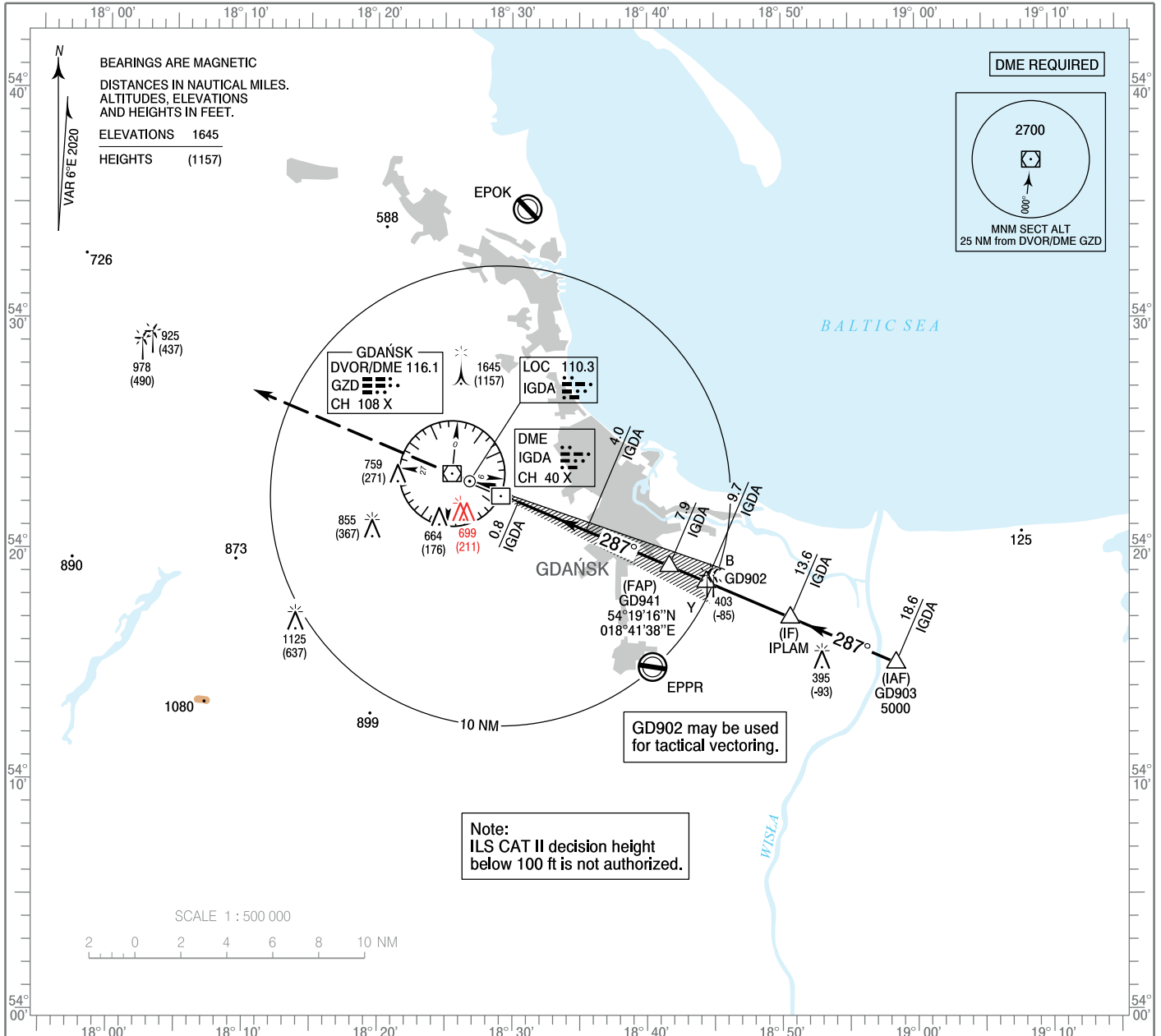
- END -

**INSTRUMENT APPROACH CHART - ICAO**

AERODROME ELEV 488 ft  
 THR RWY 29 ELEV 488 ft  
 HEIGHTS RELATED TO THR RWY 29

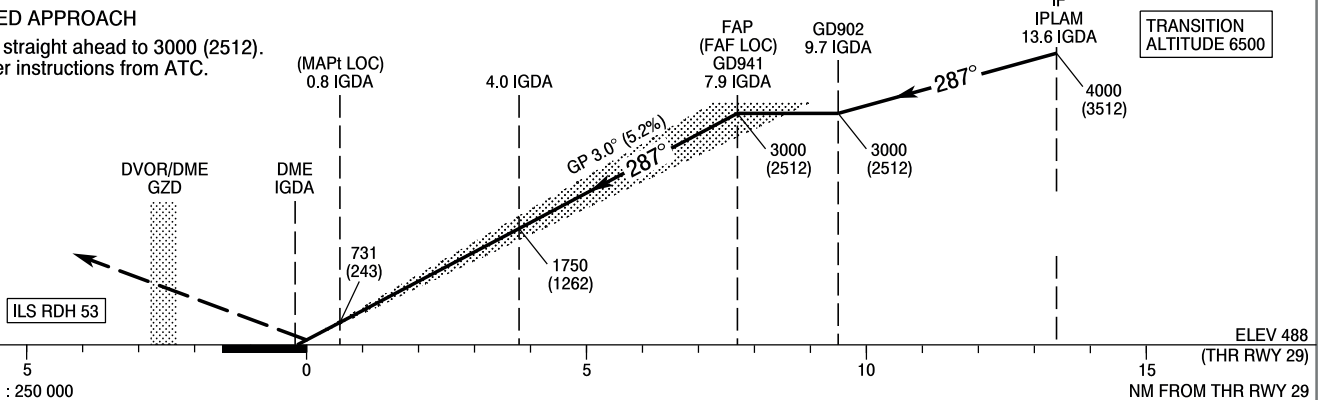
Gdańsk APPROACH 127.280, 133.660  
 Gdańsk TOWER 118.105  
 ATIS 129.630

**GDAŃSK Lech Walesa ILS CAT II & III or LOC RWY 29 (CAT A/B/C/D)**



**MISSED APPROACH**

Climb straight ahead to 3000 (2512).  
 Further instructions from ATC.



OCA (OCH)					Distance FAF - MAPt 7.1 NM								
Cat. of ACFT		A	B	C	D	Speed	kt	80	100	120	140	160	180
		Straight - in	Cat. I	688 (200)	700 (212)	708 (220)	719 (231)	Time	min : s	5 : 21	4 : 16	3 : 34	3 : 03
Cat. II	557 (69)		574 (86)	586 (98)	600 (112)	Rate of descent	ft / min	420	530	640	740	850	960
LOC	830 (342)		830 (342)	830 (342)	830 (342)		Final approach distance/altitude (height)						
ILS CAT IIIb approved.						Distance		7	6	5	4		
Circling *		1000 (512)	1000 (512)	1160 (672)	1250 (762)	Altitude (height)		2710 (2222)	2390 (1902)	2070 (1582)	1760 (1272)		

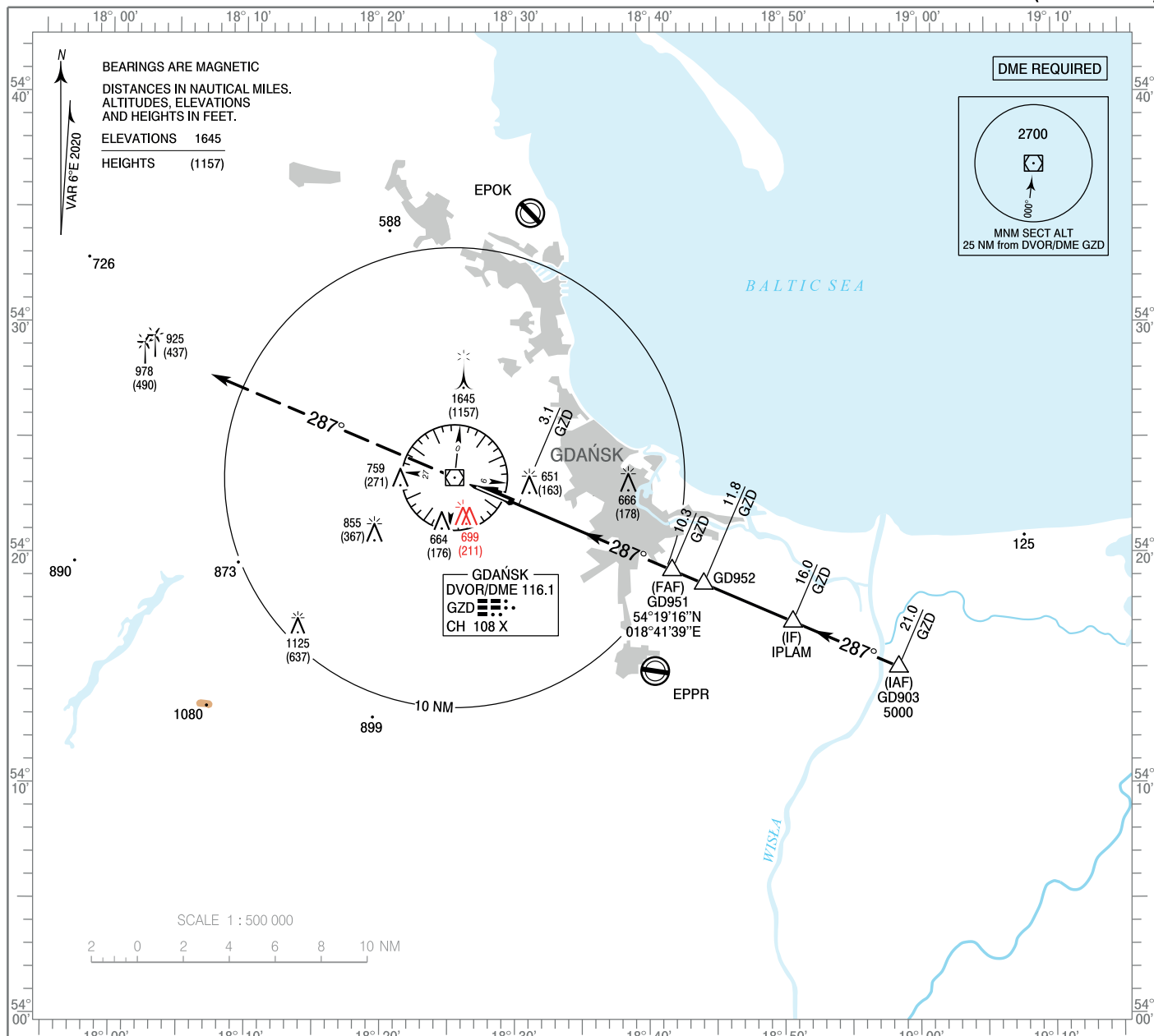
\*ACFT cat. D circling south of aerodrome only.

**INSTRUMENT APPROACH CHART - ICAO**

AERODROME ELEV 488 ft  
 THR RWY 29 ELEV 488 ft  
 HEIGHTS RELATED TO AD ELEV

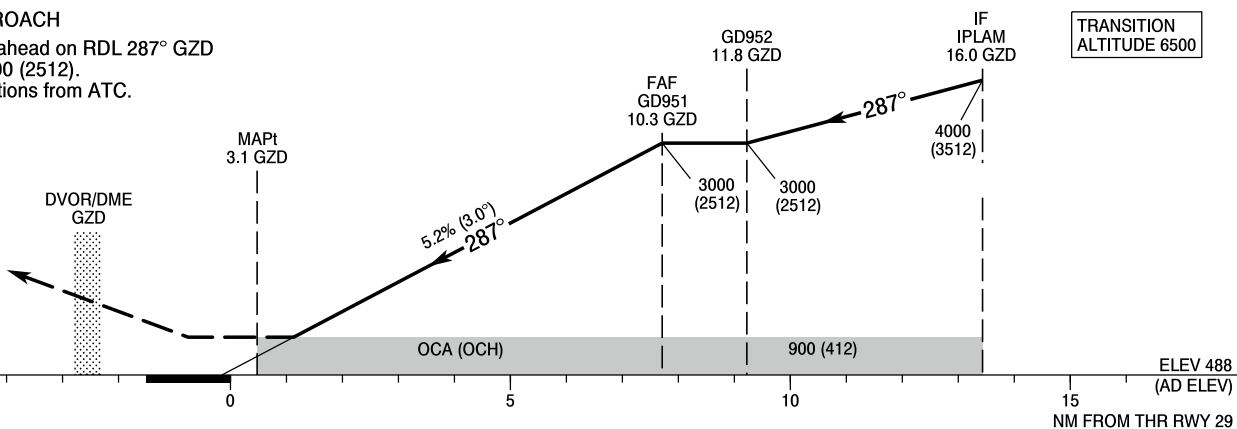
Gdańsk APPROACH 127.280, 133.660  
 Gdańsk TOWER 118.105  
 ATIS 129.630

**GDAŃSK Lech Walesa VOR RWY 29 (CAT A/B/C/D)**



**MISSED APPROACH**

Climb straight ahead on RDL 287° GZD climbing to 3000 (2512). Further instructions from ATC.



OCA (OCH)					Distance FAF - MAPt 7.2 NM							
Cat. of ACFT	A	B	C	D	Speed	kt	80	100	120	140	160	180
	Straight - in	900 (412)	900 (412)	900 (412)	900 (412)	Time	min : s	5 : 24	4 : 19	3 : 36	3 : 05	2 : 42
					Rate of descent	ft / min	420	530	640	740	850	960
					Final approach distance/altitude (height)							
Circling*	1000 (512)	1000 (512)	1160 (672)	1250 (762)	Distance		8	7	6	5		
					Altitude (height)		2280 (1792)	1970 (1482)	1650 (1162)	1330 (842)		

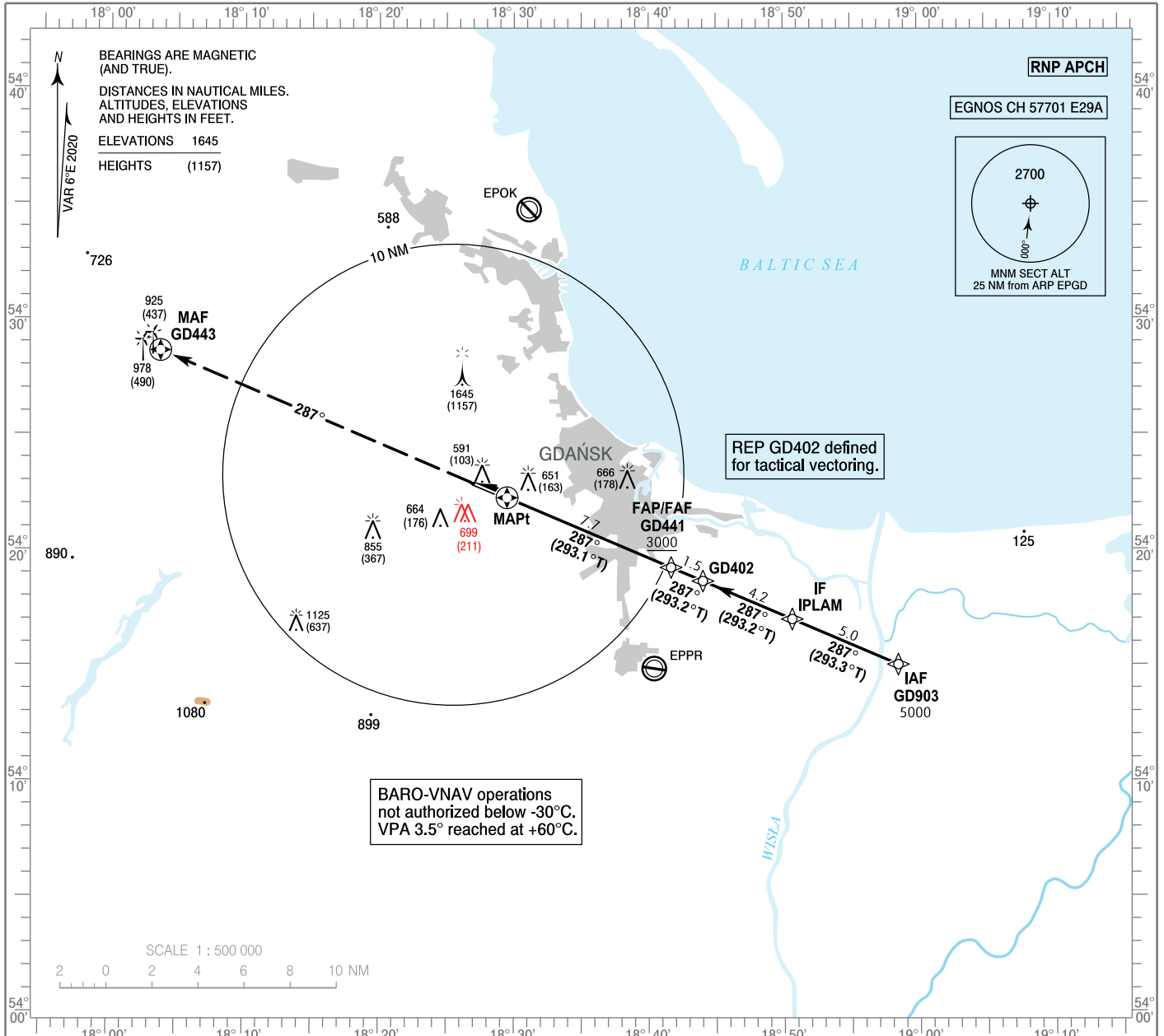
\*ACFT cat. D circling south of aerodrome only.

**INSTRUMENT APPROACH CHART - ICAO**

AERODROME ELEV 488 ft  
 THR RWY 29 ELEV 488 ft  
 HEIGHTS RELATED TO THR RWY 29

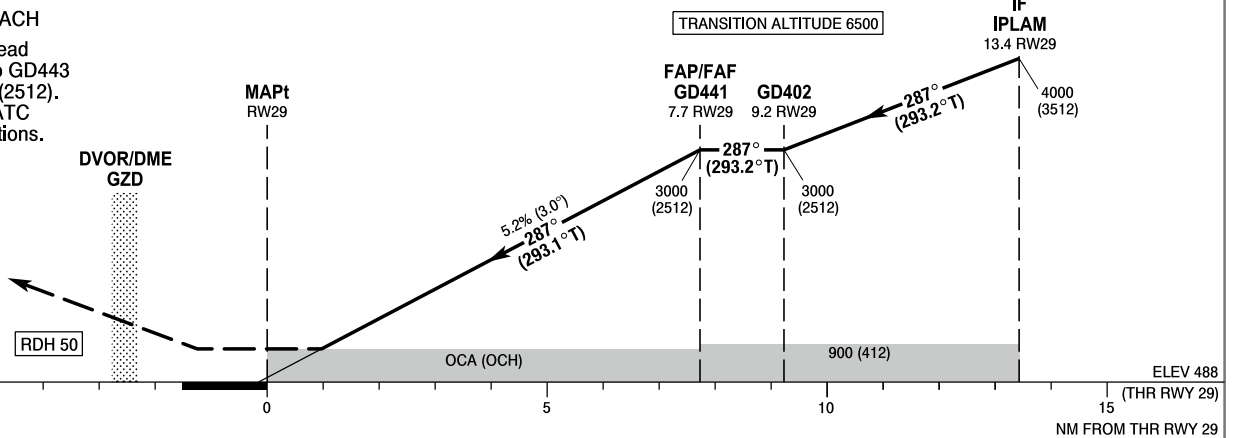
Gdańsk APPROACH 127.280, 133.660  
 Gdańsk TOWER 118.105  
 ATIS 129.630

**GDĄŃSK Lech Walesa RNP RWY 29 (CAT A/B/C/D)**



**MISSED APPROACH**

Climb straight ahead on course 287° to GD443 climbing to 3000 (2512). At 3000 contact ATC for further instructions.



OCA (OCH)					Distance FAF - MAPt 7.7 NM								
Cat. of ACFT	A	B	C	D	Speed	kt	80	100	120	140	160	180	
Straight - in	LPV	688 (200)	700 (212)	708 (220)	719 (231)	Time	min : s	5 : 48	4 : 38	3 : 52	3 : 19	2 : 54	2 : 35
	LNAV / VNAV	740 (252)	740 (252)	740 (252)	750 (262)	Rate of descent	ft / min	420	530	640	740	850	960
	LNAV	850 (362)	850 (362)	850 (362)	850 (362)		Final approach distance/altitude (height)						
Circling *	1000 (512)	1000 (512)	1160 (672)	1250 (762)	Distance	6	5	4	3	2			
*ACFT cat. D circling south of aerodrome only.					Altitude (height)	2450 (1962)	2140 (1652)	1820 (1332)	1500 (1012)	1180 (692)			