

AIRAC SUP 139/24 (AD 2 EPGD)

Data publikacji / Publication date
31 OCT 2024

Obowiązuje od / Effective from
28 NOV 2024

Obowiązuje do / Effective to
30 OCT 2025 EST

NOWA PRZESZKODA LOTNICZA W REJONIE LOTNISKA GDAŃSK IM. LECHA WAŁĘSY (EPGD)

NEW AERONAUTICAL OBSTACLE IN THE VICINITY OF GDAŃSK LECH WALESZA (EPGD) AERODROME

Nr/ No	Rodzaj przeszkody / Obstacle type	Numer identyfikacyjny / Identification number	Szerokość geograficzna / Latitude	Długość geograficzna / Longitude	Wysokość / Top of obstacle		Oznakowanie / Oświetlenie / Markings / LGT
					AGL (ft)	AMSL (ft)	
	1	2	3	4	5	6	7
1.	Radar PSR/MSSR mod-S Gdańsk	-	54 21 16.07 N	018 26 23.23 E	181	699	TAK/TAK, YES/YES

1. Zmiana minimów operacyjnych:

Radar PSR/MSSR mod-S Gdańsk będzie wyznaczał nowe wartości OCA (OCH) dla krążenia z widocznością (circling) w następujących instrumentalnych procedurach lotu:

ILS CAT II & III or LOC RWY 29: FM 960 (472) na 1000 (512) dla ACFT kat. A i FM 990 (502) na 1000 (512) dla ACFT kat. B;
VOR RWY 29: FM 960 (472) na 1000 (512) dla ACFT kat. A i FM 990 (502) na 1000 (512) dla ACFT kat. B;
RNP RWY 29: FM 960 (472) na 1000 (512) dla ACFT kat. A i FM 990 (502) na 1000 (512) dla ACFT kat. B.

Uwaga: Po weryfikacji i akceptacji danych przez Urząd Lotnictwa Cywilnego dane o przeszkodzie w tym obszarze zostaną wprowadzone do stałej zmiany AIP Polska EPGD AD 2.10 PRZESZKODY LOTNISKOWE.

Patrz: załącznik graficzny.

Niniejszy suplement zastępuje SUP 114/24.

- KONIEC -

Change of operational minima:

Radar PSR/MSSR mod-S Gdańsk will determine new OCA (OCH) values for visual circling for the following instrument flight procedures:

ILS CAT II & III or LOC RWY 29: FM 960 (472) to 1000 (512) for ACFT cat. A and FM 990 (502) to 1000 (512) for ACFT cat. B;
VOR RWY 29: FM 960 (472) to 1000 (512) for ACFT cat. A and FM 990 (502) to 1000 (512) for ACFT cat. B;
RNP RWY 29: FM 960 (472) to 1000 (512) for ACFT cat. A and FM 990 (502) to 1000 (512) for ACFT cat. B.

Remark: Upon verification and acceptance by the Civil Aviation Authority the obstacle data will be introduced into AIP Poland EPGD AD 2.10 AERODROME OBSTACLES.

See: graphical Appendix.

This supplement replaces SUP 114/24.

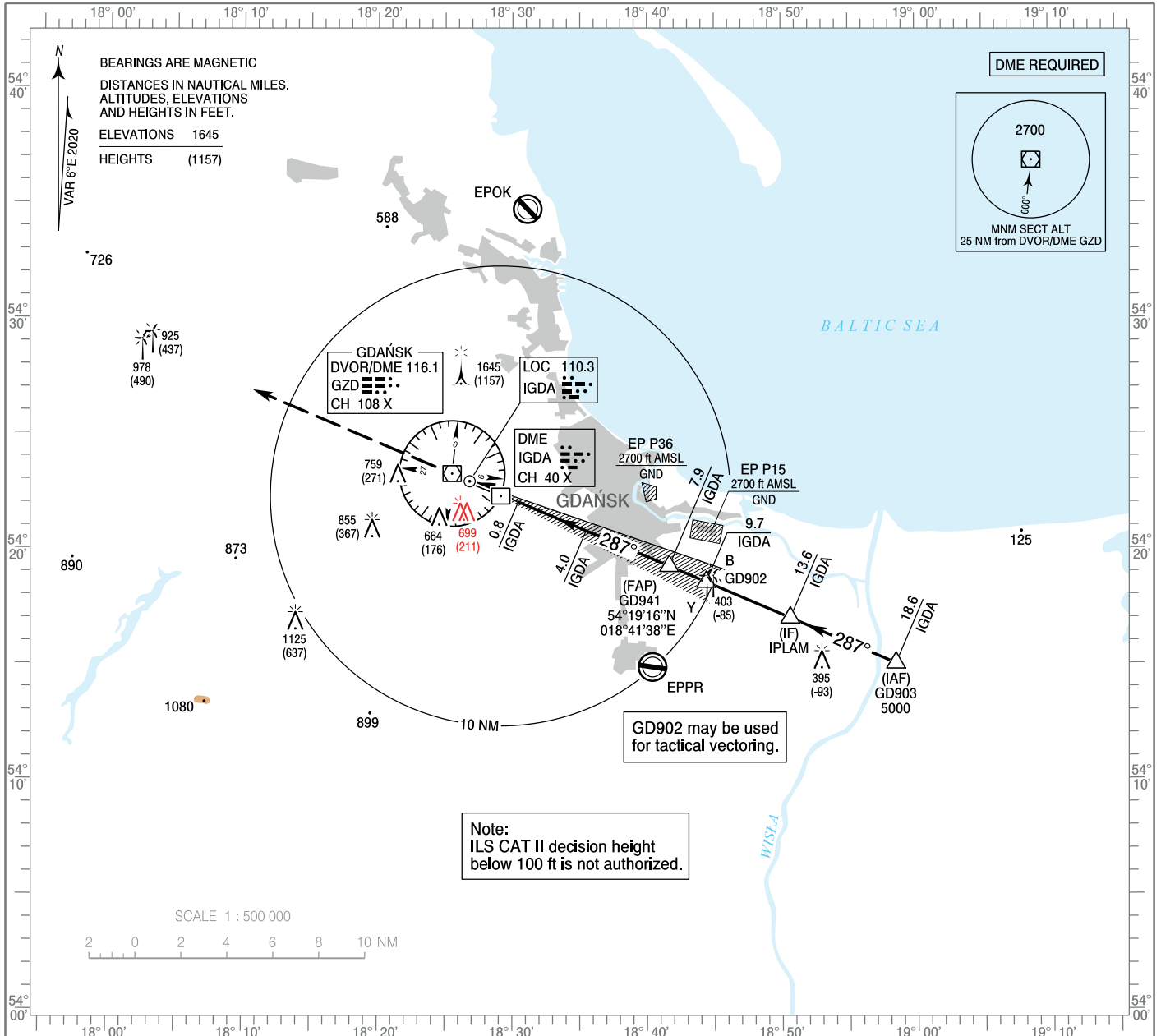
- END -

INSTRUMENT APPROACH CHART - ICAO

AERODROME ELEV 488 ft
 THR RWY 29 ELEV 488 ft
 HEIGHTS RELATED TO THR RWY 29

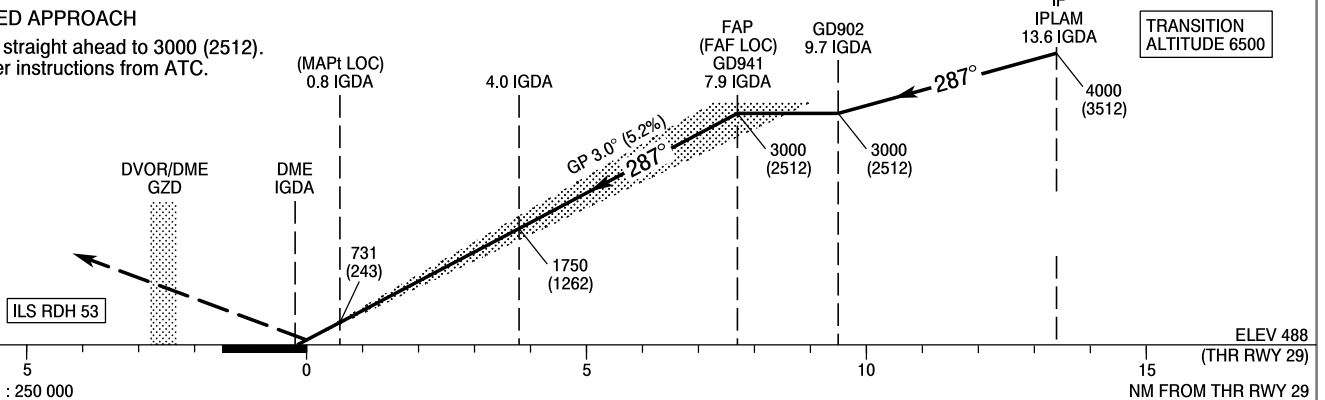
Gdańsk APPROACH 127.280, 133.660
 Gdańsk TOWER 118.105
 ATIS 129.630

GDĄŃSK Lech Walesa ILS CAT II & III or LOC RWY 29 (CAT A/B/C/D)



MISSED APPROACH

Climb straight ahead to 3000 (2512).
 Further instructions from ATC.



OCA (OCH)					Distance FAF - MAPt 7.1 NM								
Cat. of ACFT		A	B	C	D	Speed	kt	80	100	120	140	160	180
		Straight - in	Cat. I	688 (200)	700 (212)	708 (220)	719 (231)	Time	min : s	5 : 21	4 : 16	3 : 34	3 : 03
Cat. II	557 (69)		574 (86)	586 (98)	600 (112)	Rate of descent	ft / min	420	530	640	740	850	960
LOC	830 (342)		830 (342)	830 (342)	830 (342)		Final approach distance/altitude (height)						
ILS CAT IIIb approved.						Distance		7	6	5	4		
Circling *						Altitude (height)		2710 (2222)	2390 (1902)	2070 (1582)	1760 (1272)		

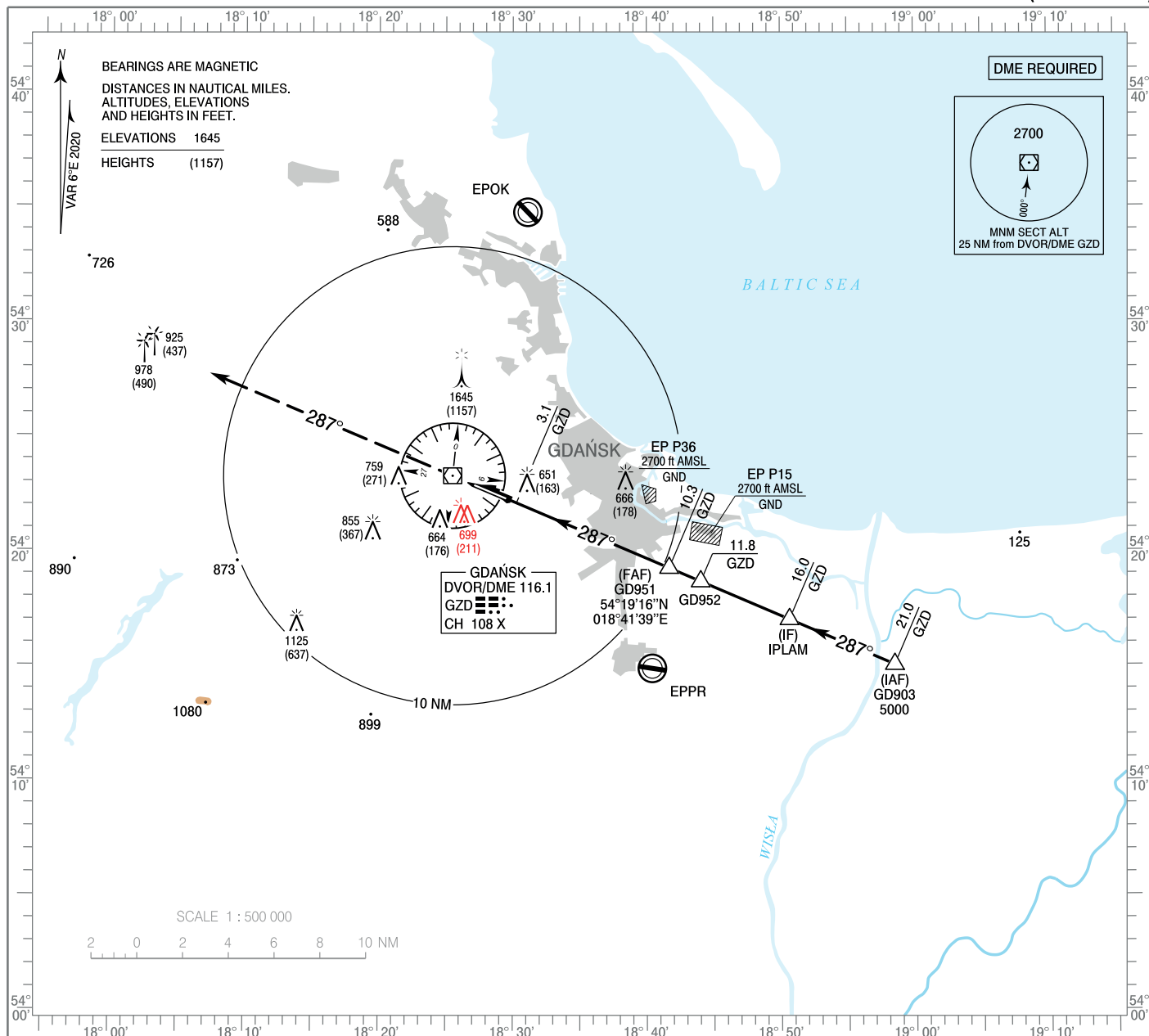
*ACFT cat. D circling south of aerodrome only.

INSTRUMENT APPROACH CHART - ICAO

AERODROME ELEV 488 ft
 THR RWY 29 ELEV 488 ft
 HEIGHTS RELATED TO AD ELEV

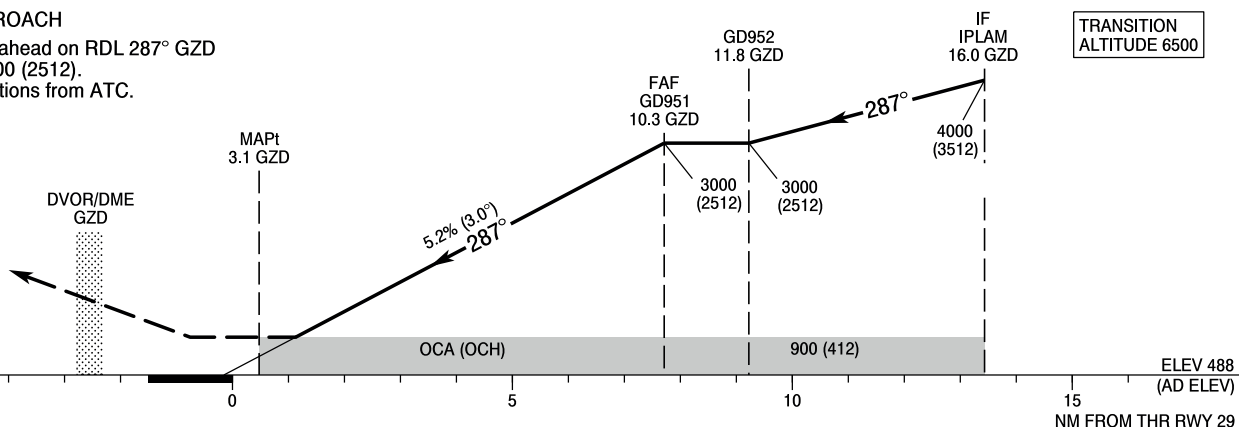
Gdańsk APPROACH 127.280, 133.660
 Gdańsk TOWER 118.105
 ATIS 129.630

GDAŃSK Lech Walesa VOR RWY 29 (CAT A/B/C/D)



MISSED APPROACH

Climb straight ahead on RDL 287° GZD climbing to 3000 (2512). Further instructions from ATC.



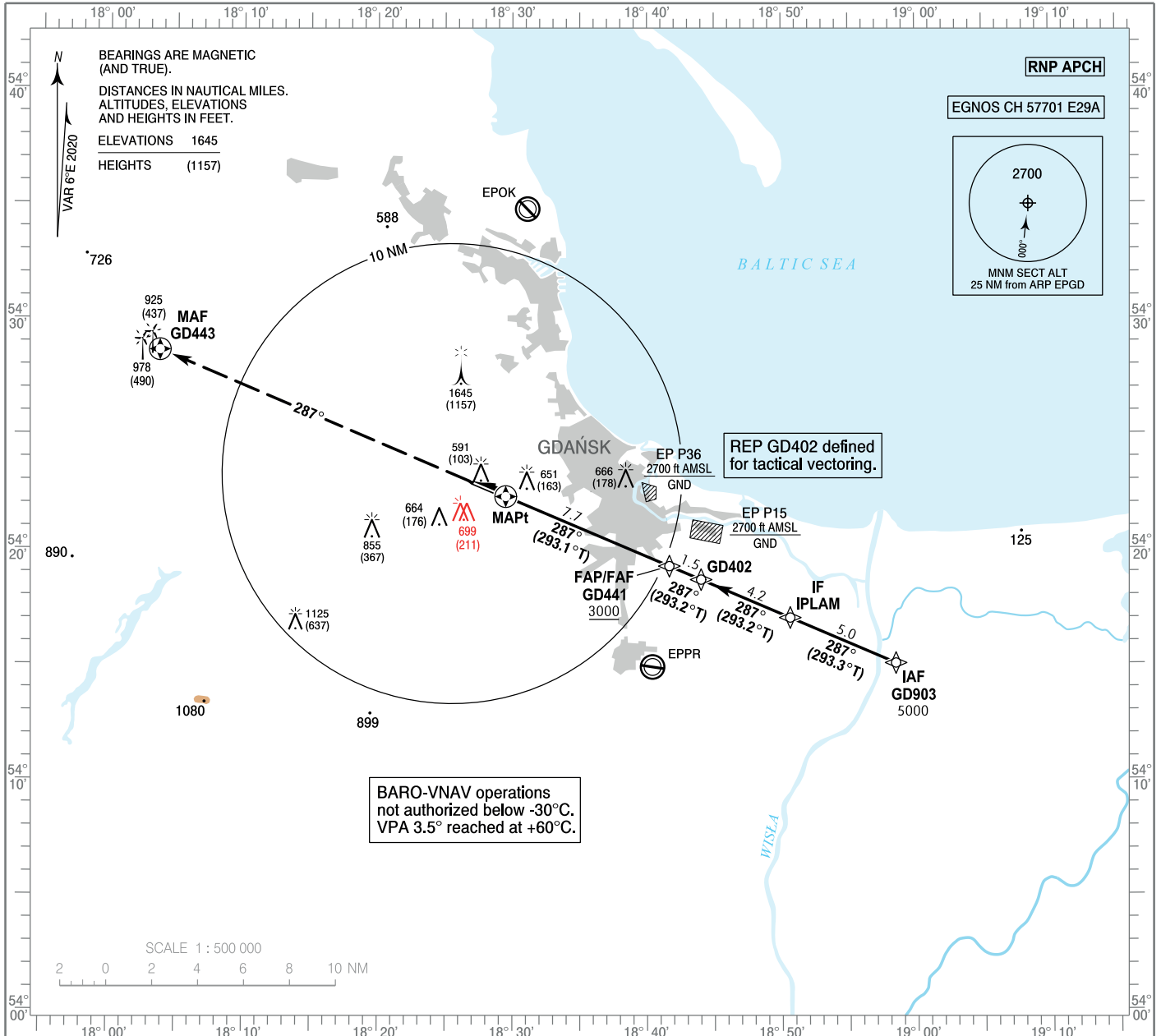
OCA (OCH)					Distance FAF - MAPt 7.2 NM							
Cat. of ACFT	A	B	C	D	Speed	kt	80	100	120	140	160	180
	Straight - in	900 (412)	900 (412)	900 (412)	900 (412)	Time	min : s	5 : 24	4 : 19	3 : 36	3 : 05	2 : 42
					Rate of descent	ft / min	420	530	640	740	850	960
					Final approach distance/altitude (height)							
Circling*	1000 (512)	1000 (512)	1160 (672)	1250 (762)	Distance		8	7	6	5		
					Altitude (height)		2280 (1792)	1970 (1482)	1650 (1162)	1330 (842)		

INSTRUMENT APPROACH CHART - ICAO

AERODROME ELEV 488 ft
 THR RWY 29 ELEV 488 ft
 HEIGHTS RELATED TO THR RWY 29

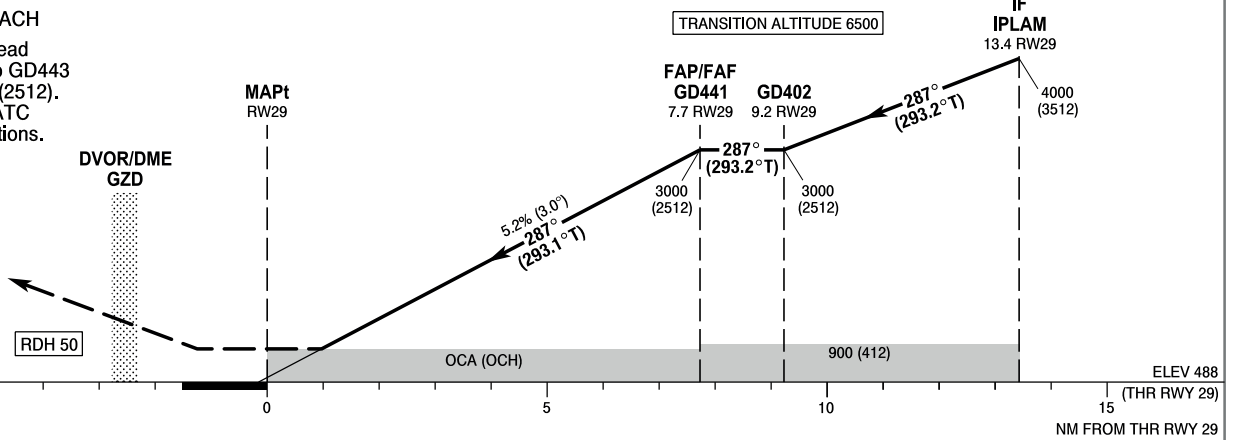
Gdańsk APPROACH 127.280, 133.660
 Gdańsk TOWER 118.105
 ATIS 129.630

GDĄŃSK Lech Walesa RNP RWY 29 (CAT A/B/C/D)



MISSED APPROACH

Climb straight ahead on course 287° to GD443 climbing to 3000 (2512). At 3000 contact ATC for further instructions.



SCALE 1 : 250 000

OCA (OCH)					Distance FAF - MAPt 7.7 NM								
Cat. of ACFT	A	B	C	D	Speed	kt	80	100	120	140	160	180	
Straight - in	LPV	688 (200)	700 (212)	708 (220)	719 (231)	Time	min : s	5 : 48	4 : 38	3 : 52	3 : 19	2 : 54	2 : 35
	LNAV / VNAV	740 (252)	740 (252)	740 (252)	750 (262)	Rate of descent	ft / min	420	530	640	740	850	960
	LNAV	850 (362)	850 (362)	850 (362)	850 (362)			Final approach distance/altitude (height)					
Circling *	1000 (512)	1000 (512)	1160 (672)	1250 (762)	Distance	6	5	4	3	2			
*ACFT cat. D circling south of aerodrome only.					Altitude (height)	2450 (1962)	2140 (1652)	1820 (1332)	1500 (1012)	1180 (692)			